



DEEP LEARNING AND NETWORKS BY UNDERSTANDING THE CONCEPT OF VEHICLE RECOGNITION

Reena. R¹, Shalini. R², Siddela Navya³, Dr. B. Kalpana⁴

^{1,2,3} Department of CSE, JNN Institute of Engineering

⁴ Head of the Department (CSE), JNN Institute of Engineering.

Article Info

Article History:

Published: 23 March 2026

Publication Issue:

Volume 3, Issue 3
March-2026

Page Number:

500-504

Corresponding Author:

Siddela Navya

Abstract:

Vehicle recognition and compliance database systems are becoming increasingly important in modern transportation and security applications. The rapid increase in the number of vehicles has created challenges in monitoring and managing vehicle access in residential areas, parking lots, and restricted premises. Traditional manual methods for vehicle identification are time-consuming and prone to human error. This project presents a vehicle recognition and compliance database software system that automatically detects vehicles and recognizes license plate numbers using computer vision and machine learning techniques. The system captures images using a camera and processes them using object detection algorithms to identify vehicles and locate license plates. Optical Character Recognition (OCR) is then used to extract the license plate number from the detected region. The extracted license plate information is compared with a stored database to verify whether the vehicle is registered or authorized to enter the premises. If the vehicle is recognized and verified, the system grants access automatically by controlling an automated gate. Otherwise, the system generates an alert or denies entry. The proposed system improves efficiency, reduces manual effort, and enhances security by providing a reliable automated vehicle recognition solution. This system can be widely applied in residential apartments, smart parking systems, toll plazas, and security checkpoints.

Keywords: Vehicle Recognition, License Plate Detection, Automatic Number Plate Recognition (ANPR), Optical Character Recognition (OCR), YOLO Object Detection, Computer Vision.

1. Introduction

The increasing number of vehicles in urban areas has created challenges for traffic management, security monitoring, and parking systems. Manual vehicle monitoring systems are inefficient and require significant human effort. As a result, automated vehicle recognition systems have gained significant attention in recent years. Vehicle recognition systems use computer vision and artificial intelligence techniques to detect vehicles and identify their license plate numbers automatically. One of the most commonly used technologies for this purpose is **Automatic Number Plate Recognition (ANPR)**. ANPR systems capture images of vehicles and process them to extract license plate numbers. Modern vehicle recognition systems use deep learning algorithms such as **Convolutional Neural Networks (CNN)** and object detection models like **YOLO (You Only Look Once)** to improve detection accuracy and processing speed. These models can detect vehicles in real-time and identify license plates even under difficult conditions such as poor lighting or different viewing angles. The integration

of vehicle recognition systems with database management systems allows organizations to store vehicle details and verify compliance automatically. Such systems are widely used in residential complexes, toll collection systems, parking management, and smart city infrastructure.

The main objective of this project is to design and develop a vehicle recognition system that automatically detects vehicles, recognizes license plate numbers, and verifies them using a compliance database.

2. Literature Review

Several research studies have been conducted in the field of vehicle recognition and license plate detection. Early approaches mainly relied on traditional image processing techniques such as edge detection, thresholding, and morphological operations to locate license plates in images. Anagnostopoulos al. proposed a license plate recognition system based on image segmentation and pattern recognition techniques. Their system achieved good accuracy but was limited by variations in lighting conditions and image quality. Duet al. conducted a comprehensive survey of Automatic License Plate Recognition (ALPR) systems and discussed various algorithms used for plate detection and character recognition. The study highlighted the importance of combining multiple techniques to improve system accuracy.

Recent research focuses on deep learning approaches for vehicle detection and recognition. Object detection models such as **YOLO, Faster R-CNN, and SSD** have shown excellent performance in detecting vehicles in real-time. These models can detect multiple objects in a single frame with high accuracy and speed. Optical Character Recognition (OCR) techniques have also improved significantly with the use of deep learning models. Modern OCR systems can accurately recognize characters from license plate images even when the images are partially blurred or distorted. The literature review indicates that combining deep learning-based object detection with OCR and database systems provides an efficient and reliable solution for vehicle recognition applications.

3. Methodology

The methodology of the proposed vehicle recognition system consists of several stages that work together to detect and verify vehicles automatically.

1. The first stage is **image acquisition**, where a camera captures images or video frames of vehicles entering the monitored area. These images are then sent to the processing unit for analysis.
2. The second stage is **image preprocessing**, where the captured images are enhanced to improve detection accuracy. This process includes noise removal, grayscale conversion, and contrast adjustment.
3. The third stage is **vehicle detection**, where a deep learning-based object detection algorithm such as YOLO is used to identify vehicles within the image. The algorithm draws bounding boxes around detected vehicles.

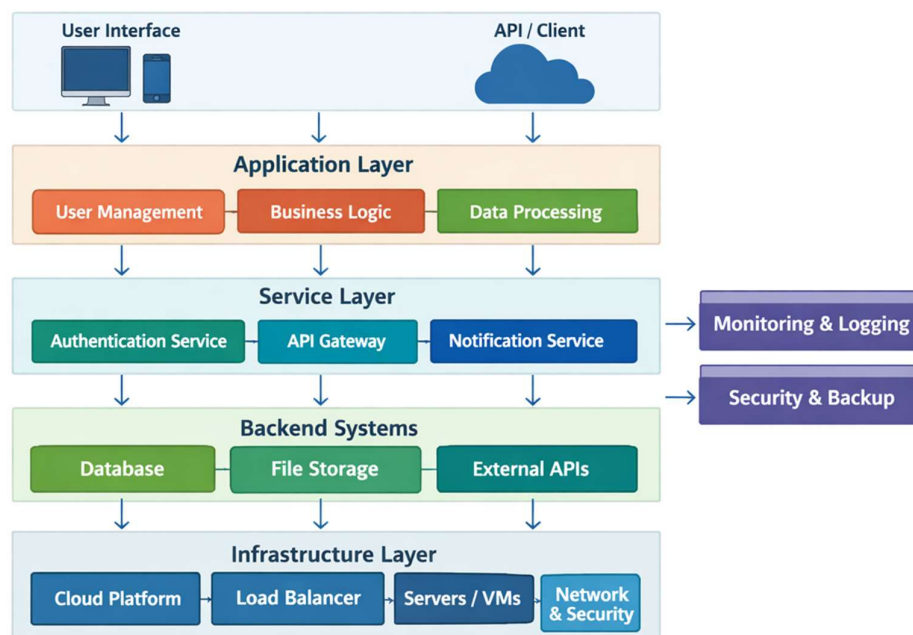
Once the vehicle is detected, the system performs **license plate detection** by locating the region containing the number plate. This region is extracted for further processing. Next, the system applies **Optical Character Recognition (OCR)** to convert the characters on the license plate into digital text. Finally, the recognized license plate number is compared with the entries stored in the **vehicle compliance database**. Based on the verification results, the system either grants access or generates an alert for unauthorized vehicles.

4. System Architecture Explanation

The system architecture of the proposed vehicle recognition system consists of multiple modules that work together to perform vehicle detection and verification.

The **camera module** captures images or video streams of vehicles entering the monitored area. These images are transmitted to the **processing module**, which performs image preprocessing and object detection. The **vehicle detection module** identifies vehicles using deep learning algorithms. Once the vehicle is detected, the **license plate detection module** extracts the region containing the number plate. The extracted license plate image is sent to the **OCR module**, which converts the characters into text format. The recognized license plate number is then stored in or compared with the **vehicle compliance database**, which contains vehicle information such as registration number, owner details, and access permissions.

Finally, the **access control module** makes a decision based on the verification results. If the vehicle is authorized, the system opens the automated gate; otherwise, it generates a warning or notification.



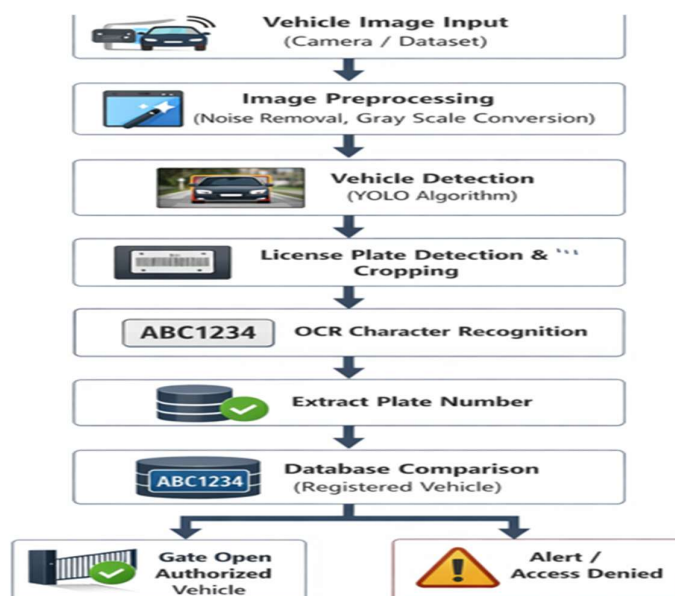
Proposed Algorithm

- Step 1: Capture vehicle image using a surveillance camera.
- Step 2: Preprocess the captured image to improve quality.
- Step 3: Apply object detection algorithm (YOLO) to detect vehicles.
- Step 4: Identify and extract the license plate region from the detected vehicle.
- Step 5: Convert the extracted image to grayscale and apply filtering techniques.
- Step 6: Apply Optical Character Recognition (OCR) to extract the license plate number.
- Step 7: Compare the recognized license plate number with the database.
- Step 8: If the vehicle is registered, allow access through the automated gate.
- Step 9: If the vehicle is not registered, generate an alert and deny access.

5. Experimental Results

The proposed vehicle recognition system was tested using a dataset of vehicle images captured from different angles and lighting conditions. The system was able to successfully detect vehicles and identify license plate numbers with high accuracy. The YOLO object detection model demonstrated fast processing speed, allowing real-time vehicle detection. The OCR module successfully extracted license plate characters from most images with minimal errors.

The integration of the system with a vehicle compliance database enabled automatic verification of vehicle information. Authorized vehicles were granted access automatically, while unauthorized vehicles triggered security alerts. The experimental results indicate that the proposed system provides an efficient and reliable solution for automated vehicle recognition and access control.



6. Conclusion

This project presents a vehicle recognition and compliance database software system that automates the process of detecting and verifying vehicles. The system uses computer vision techniques, deep learning algorithms, and OCR technology to recognize license plate numbers from captured images. The integration of the recognition system with a compliance database enables automatic verification of vehicle details and access control. This reduces manual effort and improves the overall efficiency of vehicle monitoring systems. The proposed system can be used in residential complexes, parking management systems, toll plazas, and other security applications. Future work may include improving recognition accuracy using advanced deep learning models and integrating the system with cloud-based platforms for large-scale deployment.

References

1. Anagnostopoulos, C. N. E., et al. "License Plate Recognition From Still Images and Video Sequences." IEEE Transactions on Intelligent Transportation Systems.
2. Du, S., Ibrahim, M., Shehata, M., & Badawy, W. "Automatic License Plate Recognition: A State-of-the-Art Review." IEEE Transactions on Circuits and Systems.
3. Redmon, J., & Farhadi, A. "YOLOv3: An Incremental Improvement." IEEE Conference on Computer Vision and Pattern Recognition.
4. Zhang, Z., et al. "Deep Learning Based Vehicle Detection and Recognition." IEEE Access.
5. Silva, S. M., & Jung, C. R. "License Plate Detection and Recognition in Unconstrained Scenarios." IEEE Conference on Computer Vision.
6. Charalampos Nikolaos Anagnostopoulos, I. Anagnostopoulos, V. Loumos and E. Kayafas, "License Plate Recognition from Still Images and Video Sequences: A Survey," vol. 9, no. 3, pp. 377–391, 2008.
7. Shan Du, M. Ibrahim, M. Shehata and W. Badawy, "Automatic License Plate Recognition (ALPR): A State-of-the-Art Review," vol. 23, no. 2, pp. 311–325, 2013.
8. Joseph Redmon and Ali Farhadi, "YOLOv3: An Incremental Improvement," 2018.