



The Future of Work: AI and Hybrid Workforce Management

Dr.K.Sundaresh¹, Dr.K.Balaji²

¹ Anna University Affiliated, HoD, Department of MBA, SRMBCET, Pudukkottai, TN, India

² Anna University Affiliated, Department of Mathematics, SRMBCET, Pudukkottai, TN, India.

Article Info

Article History:

Published: 23 May 2026

Publication Issue:

Volume 3, Issue 5
May-2026

Page Number:

304-308

Corresponding Author:

Dr.K.Sundaresh

Abstract:

Artificial intelligence (AI) and hybrid work models are transforming workforce management practices in modern organizations. AI-driven technologies such as workforce analytics, intelligent scheduling, recruitment automation, and collaboration systems improve productivity, communication, and organizational flexibility in hybrid work environments. This study examines the role of AI in hybrid workforce management and its impact on employee engagement, productivity, and organizational performance. The study adopts a literature review methodology using recent scholarly articles related to AI-driven workplace transformation and hybrid workforce systems. The findings reveal that AI technologies enhance workflow coordination, workforce planning, and employee collaboration. However, challenges such as technological fatigue, privacy concerns, and workforce adaptation continue to affect implementation. The study concludes that organizations should combine AI technologies with human-centered management approaches to build sustainable and flexible hybrid workplaces.

Keywords: Artificial Intelligence, Hybrid Workforce, Workforce Management, Employee Productivity, Digital Transformation

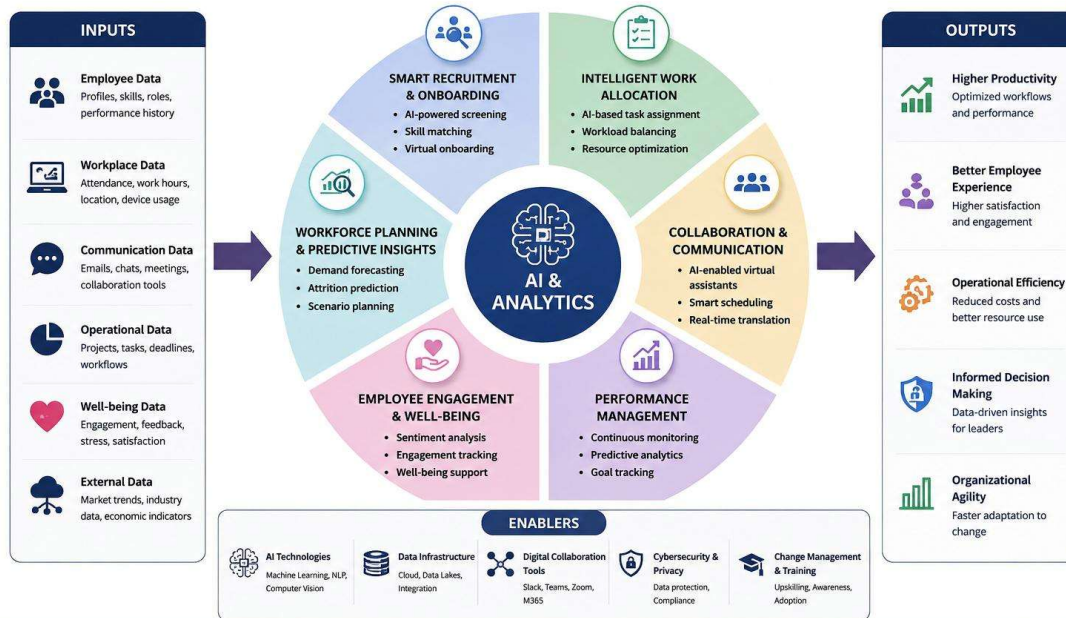
1. Introduction

The future workplace is transforming due to advancements in artificial intelligence (AI), digital transformation, and hybrid work systems. Organizations increasingly use AI-driven technologies to improve workforce flexibility, communication, operational efficiency, and employee productivity. Erkutlu (2025) explained that AI improves human resource management through predictive analytics and AI-based recruitment systems, while Jain and Kanwar (2025) highlighted that AI enhances workflow coordination and decision-making in hybrid workplaces.

Hybrid work models provide benefits such as employee flexibility, autonomy, and improved productivity. Kumar et al. (2026) stated that hybrid work systems positively influence employee performance and collaboration. However, organizations still face challenges related to technological fatigue, communication barriers, and employee engagement. Therefore, this study examines the role of AI in hybrid workforce management and sustainable workplace performance.

AI-Based Hybrid Workforce Management Framework

Integrating Artificial Intelligence to Optimize People, Processes and Performance in Hybrid Work Environments



An AI-Powered Framework for Managing and Empowering the Hybrid Workforce of the Future

2. Literature Review

Erkutlu (2025) explained that artificial intelligence improves recruitment, workforce analytics, employee engagement, and predictive workforce planning in organizations. Jain and Kanwar (2025) found that AI-driven workplace systems enhance workflow management, communication efficiency, resource allocation, and organizational decision-making within hybrid work environments. Similarly, Mohammed (2026) highlighted that AI technologies improve workforce productivity, employee evaluation systems, and organizational efficiency through digital transformation initiatives.

Saxena and Ganuthula (2026) emphasized that AI should support human participation rather than replace employees in workplace learning and coaching systems. Kumar et al. (2026) revealed that hybrid work models positively influence employee productivity, flexibility, and collaboration, although technological fatigue negatively affects employee well-being. Furthermore, Kayaalp et al. (2026) stated that supportive organizational culture and collaboration improve employee engagement and workforce performance in hybrid workplaces. Shi et al. (2026) also proposed an AI and IoT-based HR framework to strengthen workforce collaboration, employee engagement, and organizational adaptability.

3. Research Gap

Existing studies mainly explored artificial intelligence, workplace flexibility, and digital transformation separately, with limited focus on the combined role of AI and hybrid workforce management in improving employee engagement, communication, collaboration, and productivity. Most previous research concentrated on recruitment automation, workforce analytics, and organizational flexibility, while limited attention was given to AI-driven scheduling, employee well-being, and adaptive workforce management in hybrid work environments. Therefore, further research is needed to examine how artificial intelligence can support sustainable hybrid workforce systems and improve employee productivity, flexibility, communication, and satisfaction.

4. Methodology

This study adopts a qualitative literature review methodology using recent scholarly articles related to artificial intelligence, digital transformation, hybrid workforce management, and employee productivity. Secondary data were collected from peer-reviewed journal articles published between 2025 and 2026.

The collected studies were analyzed using thematic analysis to identify major themes related to AI integration, workforce flexibility, employee engagement, collaboration efficiency, and organizational performance.

Author	Focus Area	Key Findings
Erkutlu (2025)	AI in HRM	AI improves recruitment and workforce analytics
Jain & Kanwar (2025)	AI-driven workplaces	AI improves collaboration and workflow management
Kumar et al. (2026)	Hybrid work models	Flexibility improves employee performance
Kayaalp et al. (2026)	Organizational culture	Cohesion improves employee engagement

5. Discussion

Artificial intelligence has become a major technological driver shaping hybrid workforce management systems. AI-driven technologies improve workflow automation, workforce planning, employee monitoring, scheduling, and organizational communication in distributed workplaces.

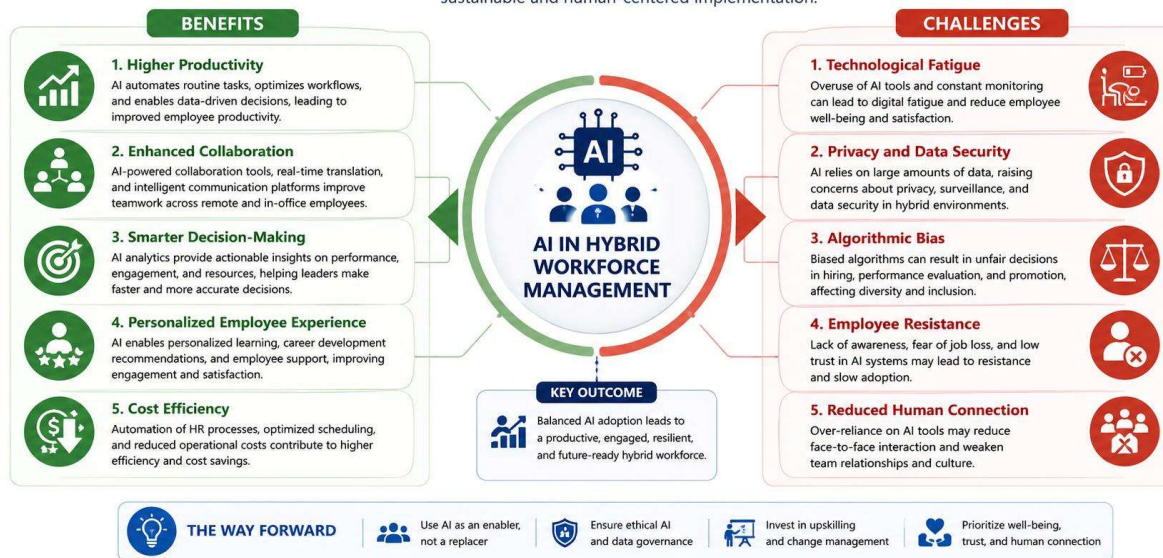
The reviewed studies indicate that hybrid work systems improve employee flexibility, autonomy, and productivity. AI-based collaboration tools and workforce analytics systems support communication and workflow coordination between remote and in-office employees. Furthermore, AI-supported scheduling systems improve workforce planning and employee interaction.

Despite these benefits, organizations face challenges such as technological fatigue, privacy concerns, cybersecurity risks, algorithmic bias, and employee resistance toward AI adoption. Kumar et al. (2026) highlighted that technological fatigue negatively affects employee productivity and workplace effectiveness.

The reviewed literature also emphasized the importance of human-centered workforce management approaches. Saxena and Ganuthula (2026) explained that AI should support human participation rather than replace employees. Kayaalp et al. (2026) further highlighted that organizational culture and employee engagement remain essential for workforce effectiveness in hybrid workplaces.

Benefits and Challenges of AI in Hybrid Workforce Management

AI technologies create value in hybrid workplaces while organizations must address key challenges for sustainable and human-centered implementation.



Organizations should therefore combine AI technologies with employee well-being, ethical governance, communication, and collaboration strategies to build sustainable hybrid workforce systems.

6. Conclusion

Artificial intelligence and hybrid work models are transforming the future workplace by improving organizational flexibility, employee productivity, communication, and operational efficiency. AI-driven workforce systems help organizations automate routine processes, improve decision-making, optimize scheduling, and enhance collaboration in distributed workplaces.

The study identified that AI technologies positively influence employee engagement, workflow coordination, and workplace flexibility. However, challenges such as technological fatigue, privacy concerns, and employee adaptation continue to affect sustainable implementation.

The research concludes that organizations should integrate AI technologies with human-centered workforce management strategies to create balanced and sustainable hybrid workplaces. Future organizations should prioritize employee well-being, ethical AI implementation, collaboration efficiency, and workforce flexibility while adopting intelligent workforce management systems.

Funding Details

This research received no specific grant from any funding agency in the public, commercial, or not-for-profit sectors.

Disclosure Statement

The authors declare that there are no financial interests, conflicts of interest, or benefits arising from the direct applications of this research.

References

- [1] Erkutlu, H. V. (2025). Artificial intelligence and human resources management: Transformation in the workplace. *Nevşehir Hacı Bektaş Veli Üniversitesi SBE Dergisi*, 15(1), 346–357. <https://doi.org/10.30783/nevsosbilen.1622590>
- [2] Jain, C., & Kanwar, J. (2025). The AI-driven workplace: How automation is reshaping flexible work arrangements. *Journal of Information Systems Engineering and Management*, 10(25s). <https://www.jisem-journal.com/>
- [3] Kumar, S., Malhotra, D., Sohbaty, Z., & Sultan, A. (2026). Impact of hybrid work models on job performance: A study through the lens of workplace flexibility and self-determination theories. *International Journal of Organization Theory & Behavior*, 1–21. <https://doi.org/10.1108/IJOTB-07-2025-0215>
- [4] Kayaalp, A., Markel, P., & Miller, T. (2026). Engaged at a distance: Cohesion, culture and performance in remote and hybrid workforces. *Journal of Management Development*, 1–10. <https://doi.org/10.1108/JMD-12-2024-0432>
- [5] Mohammed, S. M. (2026). Workforce transformation: The role of artificial intelligence in the economics of government human resources in service ministries in KSA. *International Journal of Productivity and Performance Management*, 75(2), 672–691. <https://doi.org/10.1108/IJPPM-01-2025-0048>
- [6] Saxena, M. P. K., & Ganuthula, V. R. R. (2026). Artificial intelligence and human-in-loop: A complementary approach to workplace coaching. *Development and Learning in Organizations: An International Journal*, 40(2), 31–33. <https://doi.org/10.1108/DLO-07-2025-0268>
- [7] Shi, C., Arshad, M. A. B., Luo, J., & Yang, C.-F. (2026). IoT-driven framework for enhancing human resource management system in digital era. *Sensors and Materials*, 38(1), 405–418. <https://doi.org/10.18494/SAM5793>